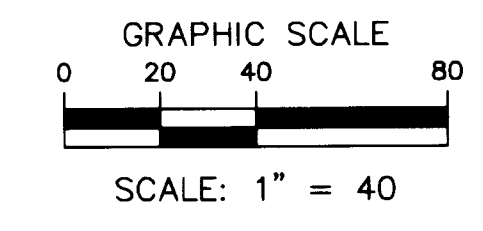
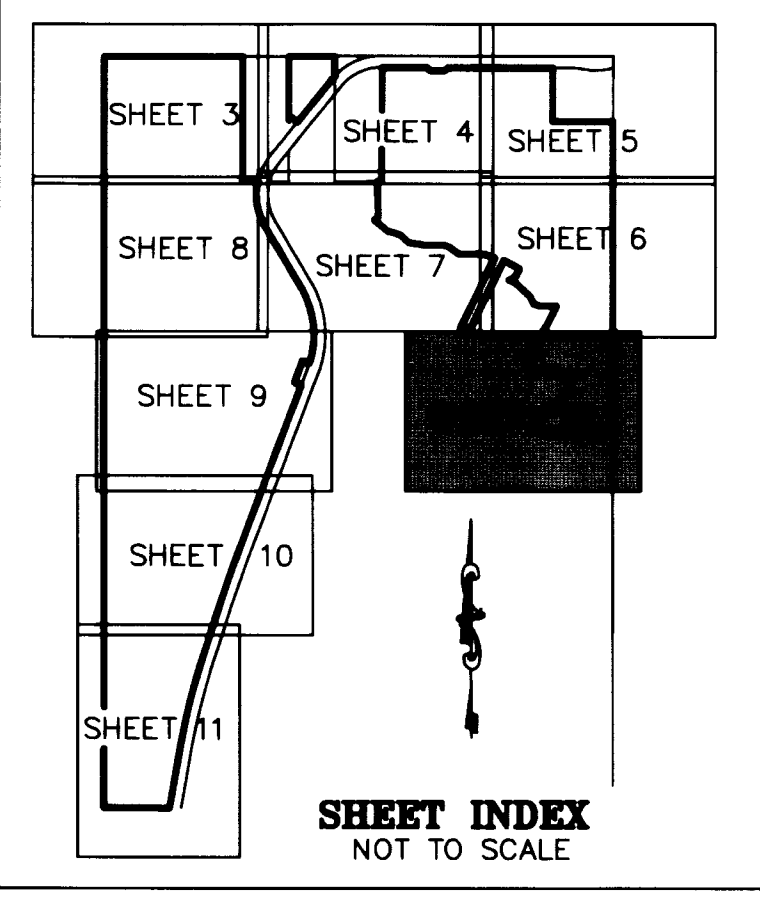


THIS INSTRUMENT PREPARED BY
DAVID P. LINDLEY
OF
CAULFIELD and WHEELER, INC.
SURVEYORS - ENGINEERS - PLANNERS
7900 GLADES ROAD, SUITE 100
BOCA RATON, FLORIDA 33434 - (561)392-1991
CERTIFICATE OF AUTHORIZATION NO. LB3591

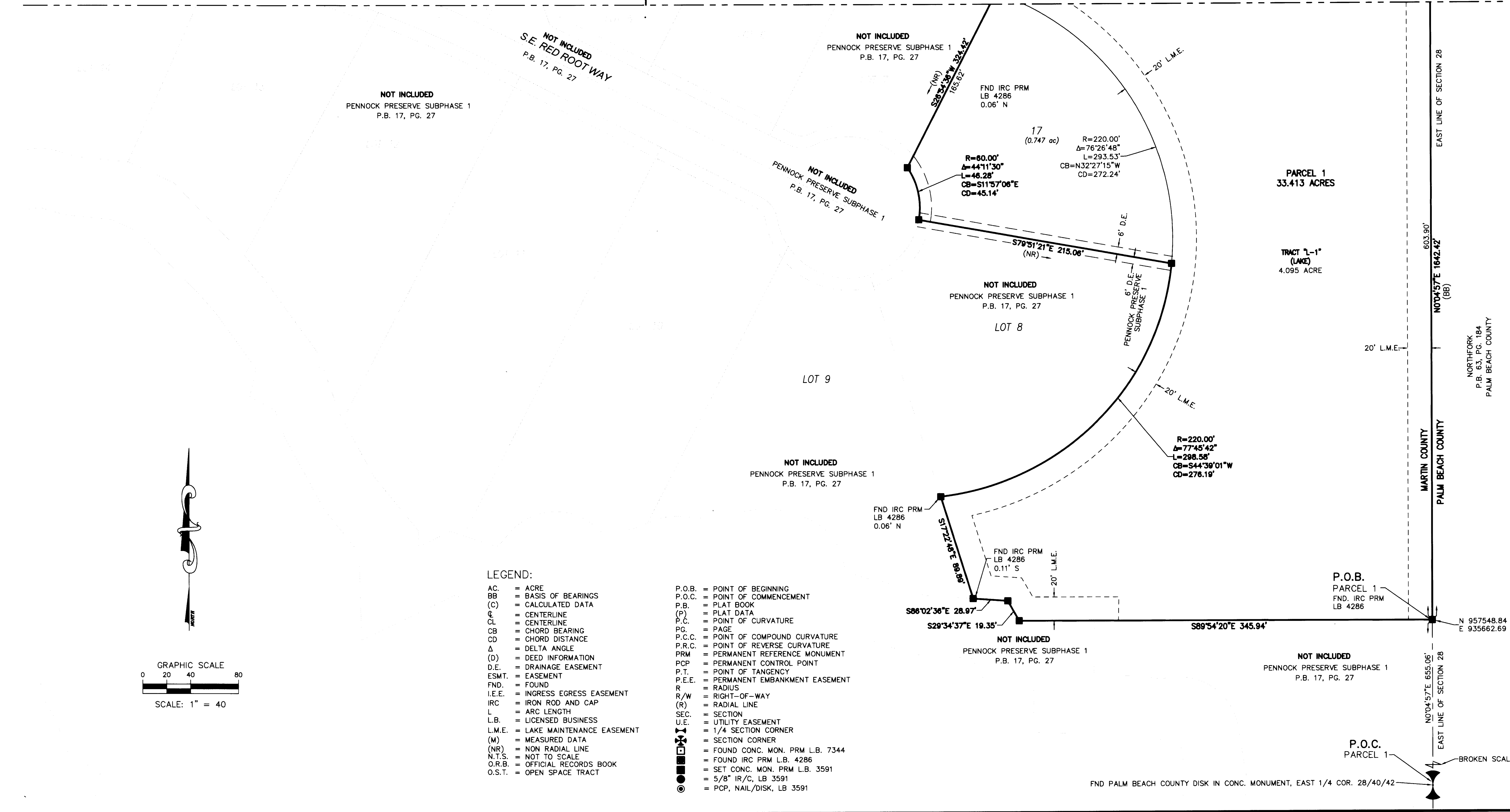
PENNOCK PRESERVE PUD, PHASE 1

BEING A REPLAT OF A PORTION OF "THE PRADO PUD", RECORDED IN PLAT BOOK 16 AT PAGE 70, PUBLIC RECORDS OF MARTIN COUNTY, FLORIDA, TOGETHER WITH TWO PARCELS OF LAND, ALL LYING IN SECTION 28, TOWNSHIP 40 SOUTH, RANGE 42 EAST MARTIN COUNTY, FLORIDA
SHEET 12 OF 12



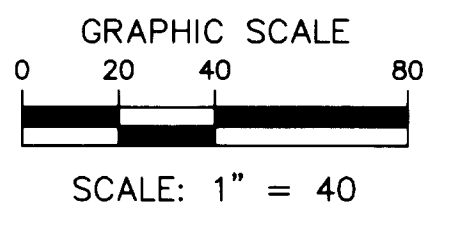
MATCHLINE SEE SHEET 7 OF 12

MATCHLINE SEE SHEET 6 OF 12



LEGEND:

- | | |
|------------------------------------|--|
| AC. = ACRE | P.O.B. = POINT OF BEGINNING |
| BB = BASIS OF BEARINGS | P.O.C. = POINT OF COMMENCEMENT |
| (C) = CALCULATED DATA | P.B. = PLAT BOOK |
| CL = CENTERLINE | (P) = PLAT DATA |
| CL = CENTERLINE | P.C. = POINT OF CURVATURE |
| CB = CHORD BEARING | PG. = PAGE |
| CD = CHORD DISTANCE | P.C.C. = POINT OF COMPOUND CURVATURE |
| Δ = DELTA ANGLE | P.R.C. = POINT OF REVERSE CURVATURE |
| (D) = DEED INFORMATION | PRM = PERMANENT REFERENCE MONUMENT |
| D.E. = DRAINAGE EASEMENT | PCP = PERMANENT CONTROL POINT |
| ESMT. = EASEMENT | P.T. = POINT OF TANGENCY |
| FND. = FOUND | P.E.E. = PERMANENT EMBANKMENT EASEMENT |
| I.E.E. = INGRESS EGRESS EASEMENT | R = RADIUS |
| IRC = IRON ROD AND CAP | R/W = RIGHT-OF-WAY |
| L = ARC LENGTH | (R) = RADIAL LINE |
| L.B. = LICENSED BUSINESS | SEC. = SECTION |
| L.M.E. = LAKE MAINTENANCE EASEMENT | U.E. = UTILITY EASEMENT |
| (M) = MEASURED DATA | 1/4 SECTION CORNER |
| (NR) = NON RADIAL LINE | SECTION CORNER |
| N.T.S. = NOT TO SCALE | FOUND CONC. MON. PRM L.B. 7344 |
| O.R.B. = OFFICIAL RECORDS BOOK | FOUND IRC PRM L.B. 4286 |
| O.S.T. = OPEN SPACE TRACT | SET CONC. MON. PRM L.B. 3591 |
| | 5/8" IR/C, LB 3591 |
| | PCP, NAIL/DISK, LB 3591 |



FND PALM BEACH COUNTY DISK IN CONC. MONUMENT, EAST 1/4 COR. 28/40/42

EAST LINE OF SECTION 28
603.90'
N0°04'57"E 1642.42'
(BB)
NORTH FORK
P.B. 63, PG. 184
PALM BEACH COUNTY
MARTIN COUNTY
PALM BEACH COUNTY
N 95°548.84'
E 935662.69'
EAST LINE OF SECTION 28
N0°04'57"E 655.06'